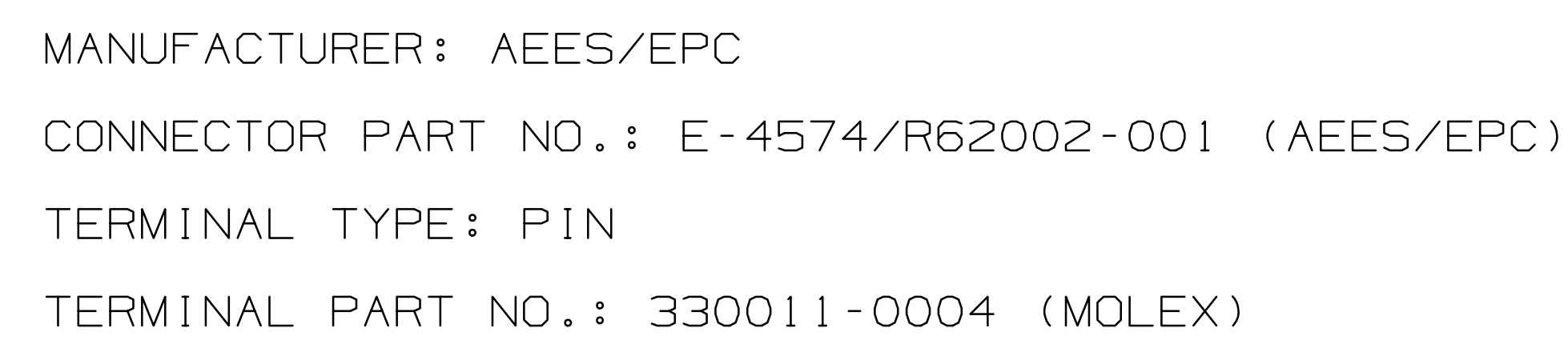
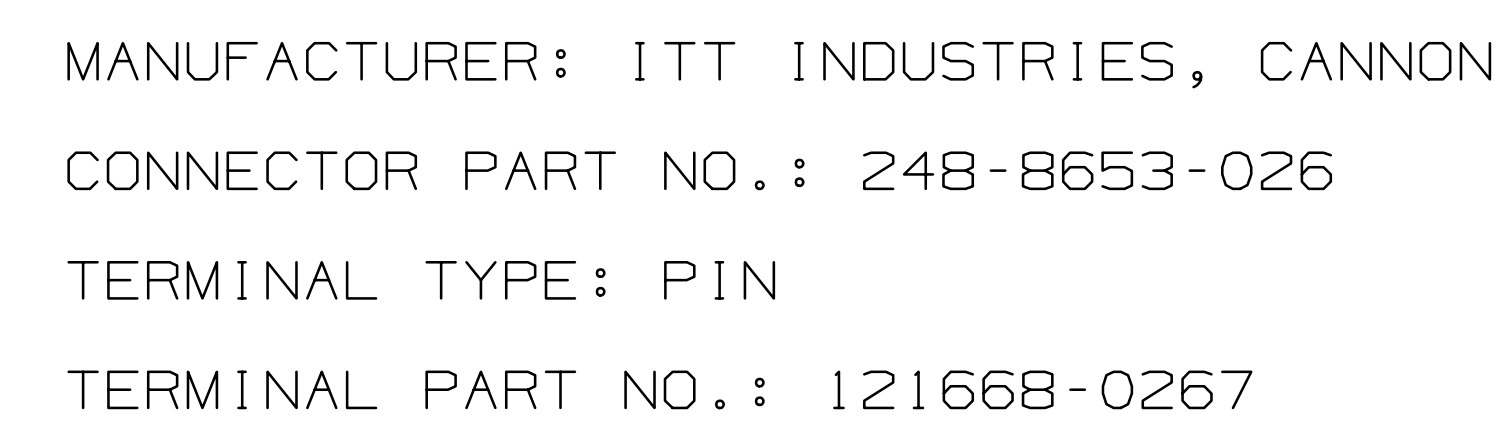


COMPONENT REFERENCE: AS64-431



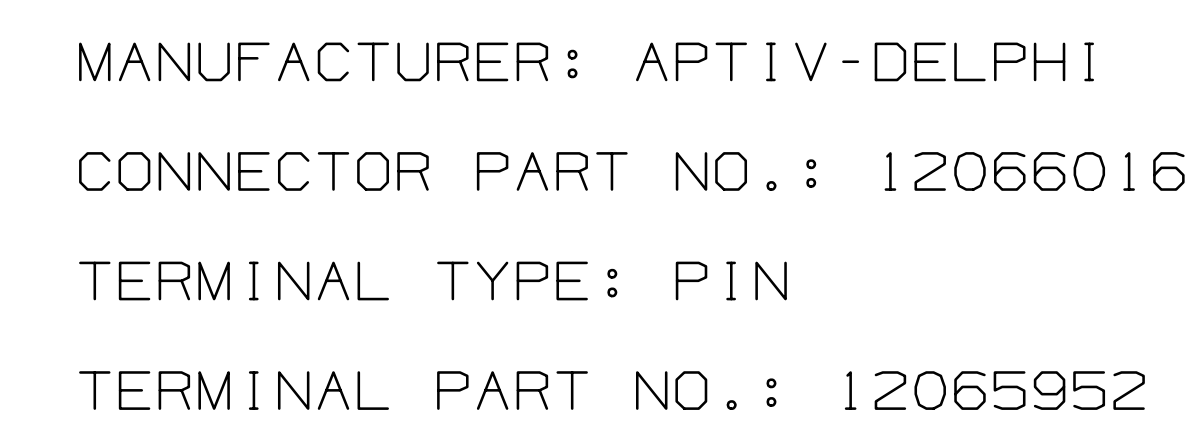
ALL MATING PARTS ARE SUPPLIED AND INSTALLED BY THE
VEHICLE BUILDER

COMPONENT REFERENCE: AS07-431



ALL MATING PARTS ARE SUPPLIED AND INSTALLED BY THE
VEHICLE BUILDER

COMPONENT REFERENCE: AS64-431



ALL MATING PARTS ARE SUPPLIED AND INSTALLED BY THE
VEHICLE BUILDER

COMPONENT REFERENCES: AS64-431



MANUFACTURER: APTIV-DELPHI
CONNECTOR PART NO.: SIMILAR TO APTIV-DELPHI
PART NO. 12084669
TERMINAL TYPE: PIN
TERMINAL PART NO.: 12065952

ALL MATING PARTS ARE SUPPLIED AND INSTALLED BY
THE VEHICLE BUILDER

COMPONENT REFERENCE: AS64-931



MANUFACTURER: APTIV-DELPHI
CONNECTOR PART NO.: 35490841
TERMINAL TYPE: PIN
TERMINAL PART NO.: 13711543, 13697411, 13783282

ALL MATING PARTS ARE SUPPLIED AND INSTALLED BY THE
VEHICLE BUILDER

CONNECTORS ON OEM HARNESS MUST MATE
TO THE VARIOUS CONFIGURATIONS SHOWN

AS07-605

TRANSMISSION-MOUNTED CONNECTORS - 3000/4000 PRODUCT FAMILIES

20 - WAY MAIN TRANSMISSION CONNECTOR

COMPONENT REFERENCES: AS66-431
AS67-431

PIN LOCATIONS

PIN 1, PIN 6, PIN 7, PIN 10, PIN 11, PIN 14, PIN 15, PIN 20

MANUFACTURER: AEES/EPC
CONNECTOR PART NO.: E-4593/R-62000
TERMINAL TYPE: PIN
TERMINAL PART NO.: INTEGRAL TO CONNECTOR

ALL MATING PARTS ARE SUPPLIED AND INSTALLED BY THE VEHICLE BUILDER

ENGINE, TURBINE

COMPONENT REFERENCES: AS66-431
AS67-431

PIN LOCATIONS

PIN A (HIGH), PIN B (LOW)

MANUFACTURER: APTIV-DELPHI
CONNECTOR PART NO.: 12066016
TERMINAL TYPE: PIN
TERMINAL PART NO.: 12065952

ALL MATING PARTS ARE SUPPLIED AND INSTALLED BY THE VEHICLE BUILDER

OPTIONAL EBS PRESSURE TRANSDUCER

COMPONENT REFERENCES: AS66-406
AS67-406

PIN LOCATIONS

SUPPLY VOLTAGE, V OUT, GND

MANUFACTURER: GM POWERTAIN
CONNECTOR PART NO.: INTEGRAL TO PRESSURE TRANSDUCER SIMILAR TO APTIV 15336119

ALL MATING PARTS ARE SUPPLIED AND INSTALLED BY THE VEHICLE BUILDER

37-WAY EUROPEAN TRANSMISSION COMPANION HARNESS CONNECTOR

COMPONENT REFERENCE: AS07-431

PIN LOCATIONS

PIN 1, PIN 4, PIN 34, PIN 37

MANUFACTURER: ITT INDUSTRIES, CANNON
CONNECTOR PART NO.: 248-8653-026
TERMINAL TYPE: PIN
TERMINAL PART NO.: 121668-0267

ALL MATING PARTS ARE SUPPLIED AND INSTALLED BY THE VEHICLE BUILDER

OUTPUT SPEED SENSOR (HESS)
RETARDER ACCUMULATOR - AIR SOLENOID CONNECTOR

COMPONENT REFERENCES: AS66-406
AS67-406

PIN LOCATIONS

PIN A, PIN B

3000/4000 PRODUCT FAMILIES ONLY

MANUFACTURER: APTIV-DELPHI
CONNECTOR PART NO.: SIMILAR TO APTIV-DELPHI PART NO. 12084669
TERMINAL TYPE: PIN
TERMINAL PART NO.: 12065952

ALL MATING PARTS ARE SUPPLIED AND INSTALLED BY THE VEHICLE BUILDER

RETARDER VALVE BODY CONNECTOR

COMPONENT REFERENCES: AS66-431
AS67-431

PIN LOCATIONS

PIN A, PIN B

MANUFACTURER: AEES/EPC
CONNECTOR PART NO.: 12084669
TERMINAL TYPE: PIN
TERMINAL PART NO.: 12065952

ALL MATING PARTS ARE SUPPLIED AND INSTALLED BY THE VEHICLE BUILDER

RETARDER TEMPERATURE SENSOR CONNECTOR

COMPONENT REFERENCES: AS66-431
AS67-431

PIN LOCATIONS

PIN A (HIGH), PIN B (LOW)

MANUFACTURER: APTIV-DELPHI
CONNECTOR PART NO.: SIMILAR TO APTIV-DELPHI PART NO. 15326309
TERMINAL TYPE: PIN
TERMINAL PART NO.:

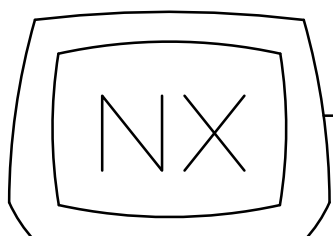
ALL MATING PARTS ARE SUPPLIED AND INSTALLED BY THE VEHICLE BUILDER

REFER TO TECHNICAL DOCUMENT NO. 173 (TD173) FOR MATING CONNECTOR P/N INFORMATION.

ALL VIEWS SHOW ALLISON COMPONENTS, AS VIEWED FROM MATING CONNECTOR SIDE.

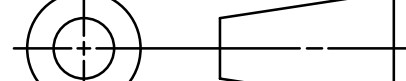
CONNECTORS ON OEM HARNESS MUST MATE TO THE VARIOUS CONFIGURATIONS SHOWN.

ALLISON 6th
GENERATION
CONTROLS



METRIC

THIRD ANGLE



THE INFORMATION CONTAINED HEREIN IS PROPRIETARY AND THE PROPERTY OF ALLISON TRANSMISSION, INC AND MAY NOT BE REPRODUCED, DISCLOSED OR USED FOR ANY PURPOSE OTHER THAN A QUOTATION TO OR ON ORDER FROM ALLISON TRANSMISSION, INC WITHOUT THE SPECIFIC WRITTEN AUTHORIZATION OF ALLISON TRANSMISSION, INC.

FR1

DWG. NO.
AS07-605

LTR

SH

B

2

B (2)UPDATED "OUTPUT SPEED SENSOR (HESS) RETARDER ACCUMULATOR..."HARDWARE CHART

REV DESCRIPTION DATE

DATE 260C21
CHECKED K. SPEER
DATE 290C21
APPROVED J. JOHNSON
DATE 290C21
PROJ. ENGR. J. CHAILLE
DATE 290C21
APPL. ENGR. T. BROWN
DATE 290C21

INSTL DWG, CONNECTOR - 6TH GEN

MODEL ALLISON 6TH GENERATION CONTROLS

SIZE CAGE CODE DWG NO
R 73342 AS07-605

SCALE 1/1
CURRENT STATUS:
RX-Released - EXP

SHEET 2 OF 3

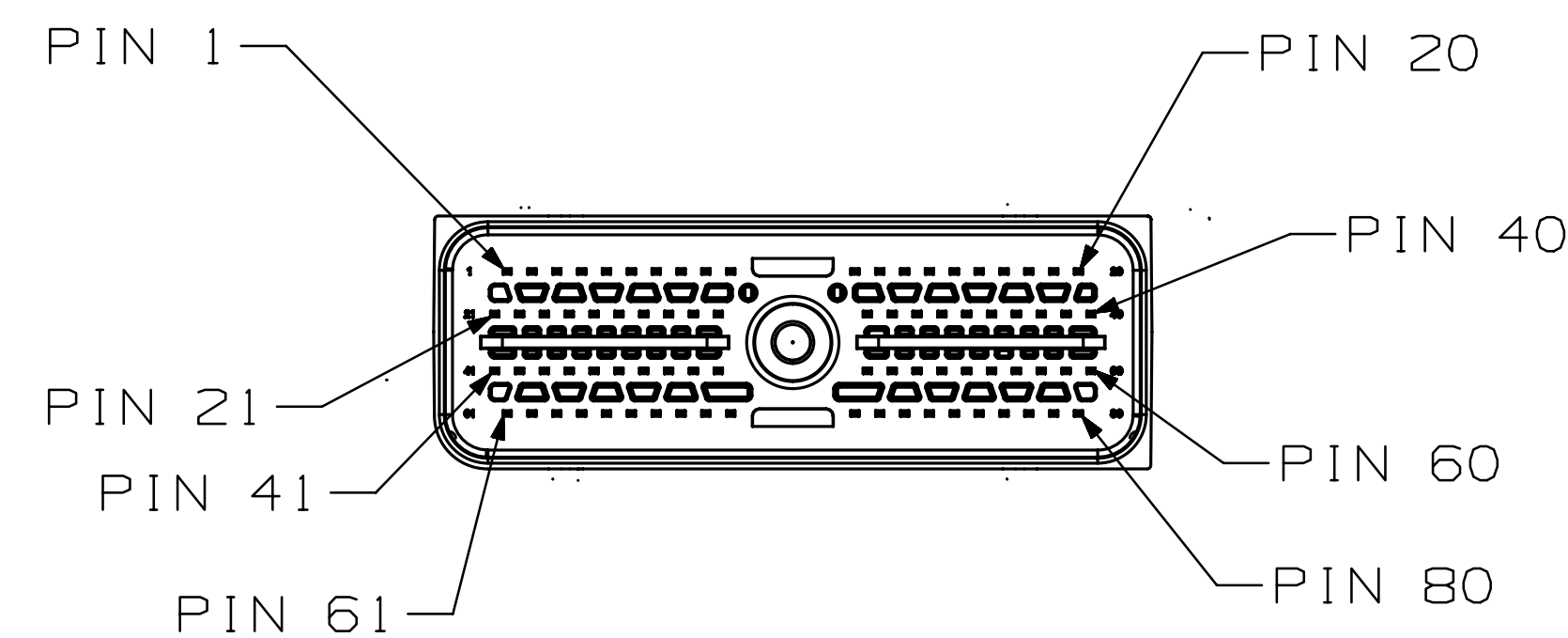
DWG NO
AS07-605

CONNECTORS FOR CONTROLS COMPONENTS AND REMOTE-MOUNTED COMPONENTS

CHASSIS-MOUNTED TRANSMISSION CONTROL MODULE (TCM) CONNECTOR

COMPONENT REFERENCE: AS07-512

PIN LOCATIONS



1000/2000/2900/3000/4000 PRODUCT FAMILIES

MANUFACTURER: AEES/EPC

CONNECTOR PART NO.: INTEGRAL TO TCM

TERMINAL TYPE: PIN

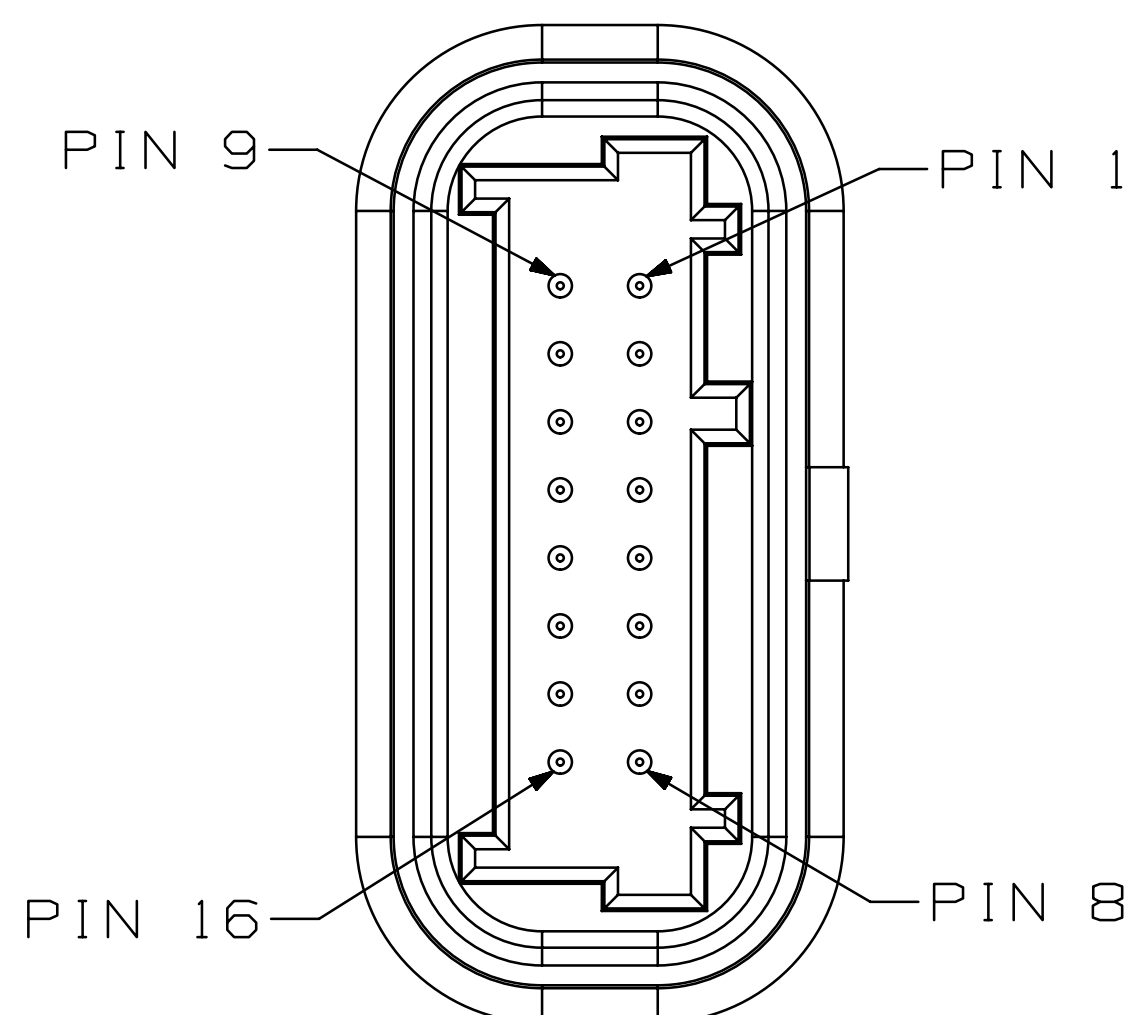
TERMINAL PART NO.: SD-33012-001

ALL MATING PARTS ARE SUPPLIED AND INSTALLED
BY THE VEHICLE BUILDER

ALLISON KEYPAD, STRIP PUSH-BUTTON AND LEVER
SHIFT SELECTORS

COMPONENT REFERENCE: AS07-517

PIN LOCATIONS



2900/3000/4000 PRODUCT FAMILIES AND TC10 ONLY

MANUFACTURER: ARENS CONTROLS CO. LLC

INTEGRAL TO SHIFT SELECTOR.
SIMILAR TO APTIV-DELPHI PART NO. 12191064.

TERMINAL TYPE: PIN

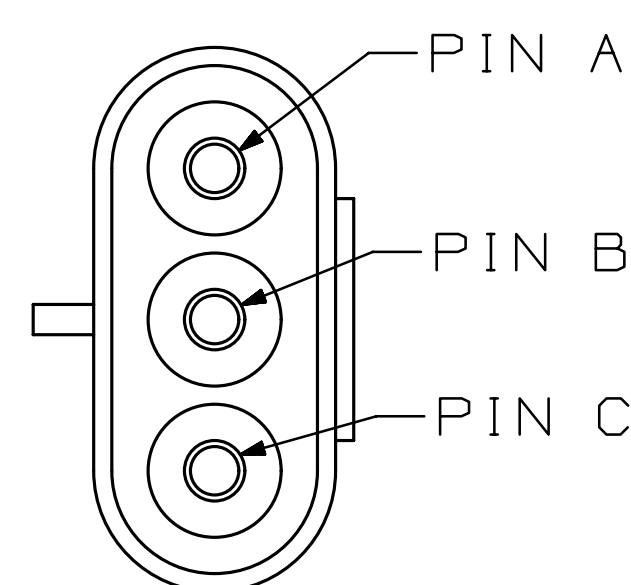
TERMINAL TYPE: PIN
TERMINAL PART NO.: 12092396

ALL MATING PARTS ARE SUPPLIED AND INSTALLED BY
THE VEHICLE BUILDER

RETARDER MODULE, RESISTANCE (RMR) CONNECTOR

COMPONENT REFERENCE: AS07-504

PIN LOCATIONS



3000/4000 PRODUCT FAMILIES ONLY

MANUFACTURER: APTIV-DELPHI

CONNECTOR PART NO.: 12015092 CONNECTOR,
12089444 SEAL

TERMINAL TYPE: SOCKET

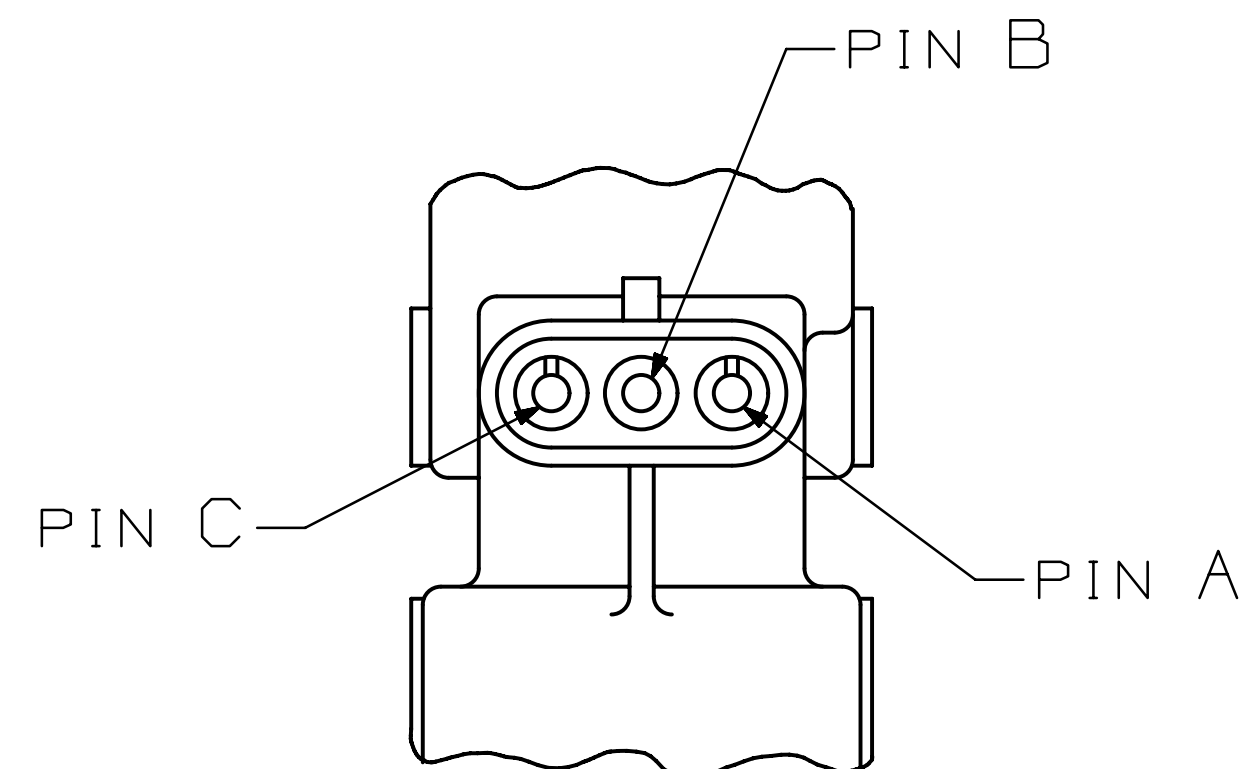
TERMINAL PART NO.: 12089188

ALL MATING PARTS ARE SUPPLIED AND INSTALLED
BY THE VEHICLE BUILDER

THROTTLE POSITION SENSOR (TPS) CONNECTOR

COMPONENT REFERENCE: AS07-551

PIN LOCATIONS



MANUFACTURER: APT IV-DELPHI

CONNECTOR PART NO.: SIMILAR TO
APTIV-DELPHI PART NO. 12010717

TERMINAL TYPE: SOCKET


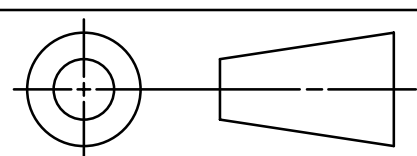
TERMINAL PART NO.: 0462-201-16141

ALL MATING PARTS ARE SUPPLIED AND INSTALLED
BY THE VEHICLE BUILDER

FOR MATING CONNECTOR P/N INFORMATION, REFER TO:
-TECHNICAL DOCUMENT 173 (TD173) FOR 1000/2000/3000/4000 PRODUCT FAMILIES.

ALL VIEWS SHOW ALLISON COMPONENTS, AS VIEWED FROM
MATING CONNECTOR SIDE.

CONNECTORS ON OEM HARNESS MUST MATE TO THE VARIOUS CONFIGURATIONS SHOWN.

<div style="border: 1px solid black; padding: 5px; display: inline-block;"> ALLISON 6TH GENERATION CONTROLS </div>		A (5) ADDED "2900" TO PRODUCT FAMILIES USED FOR TCM (6) ADDED "2900" TO PRODUCT FAMILIES USED FOR SELECTORS		1BMY22 RH JC DATE DIMCHK	
<div style="border: 1px solid black; padding: 5px; display: inline-block;"> NX </div>		FR2		REV DESCRIPTION	
SPECIFIED DIMENSIONS HAVE PRECEDENCE OVER COMPUTER GENERATED DATA		DRAWN R. HIGGINS DATE 260C21 CHECKED K. SPEER DATE 290C21 APPROVED J. JOHNSON DATE 290C21 PROJ. ENGR. J. CHATLLE DATE 290C21 APPL. ENGR. T. BROWN DATE 290C21		<div style="text-align: center;">  Allison Transmission. 1st and 1st S, 1st and, USA </div>	
CHANGE RESTRICTED		INSTL DWG, CONNECTOR - 6TH GEN		REVISIONS	
METRIC					
THIRD ANGLE					
THE INFORMATION CONTAINED HEREIN IS PROPRIETARY AND THE PROPERTY OF ALLISON TRANSMISSION, INC AND MAY NOT BE REPRODUCED, DISCLOSED OR USED FOR ANY PURPOSE OTHER THAN A QUOTATION TO OR ON ORDER FROM ALLISON TRANSMISSION, INC WITHOUT THE SPECIFIC WRITTEN AUTHORIZATION OF ALLISON TRANSMISSION, INC.				MODEL ALLISON 6TH GENERATION CONTROLS	
		SIZE CAGE CODE DWG NO R 73342 AS07-605			
		SCALE 1/1		SHEET 3 OF 3	
		CURRENT STATUS: RX-Released - EXP			